

# 3405 Lonergan Dr. Rockford, IL

13,300 SF Industrial Building



## Property Highlights

- 13,300 SF Building
  - 11,800 SF Warehouse
  - 1,500 SF Office
- Clear Height of 16' - 17'
- 1 Dock High Door
- 2 Grade Level Doors
- Zoning I-1
- 600 Amps, 300 V, 3-Phase
- Located in the Stenstrom Industrial Park
- Close to Collins Aerospace, Eastrock and Pyramid Industrial Parks
- Under 5 minutes to Bypass 20/S. Alpine Rd. interchange
- Under 5 minutes to I-39/I-90



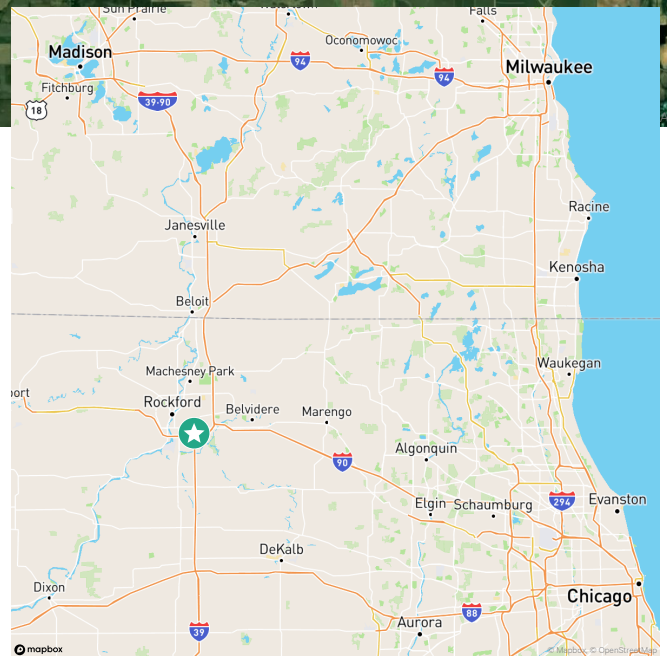
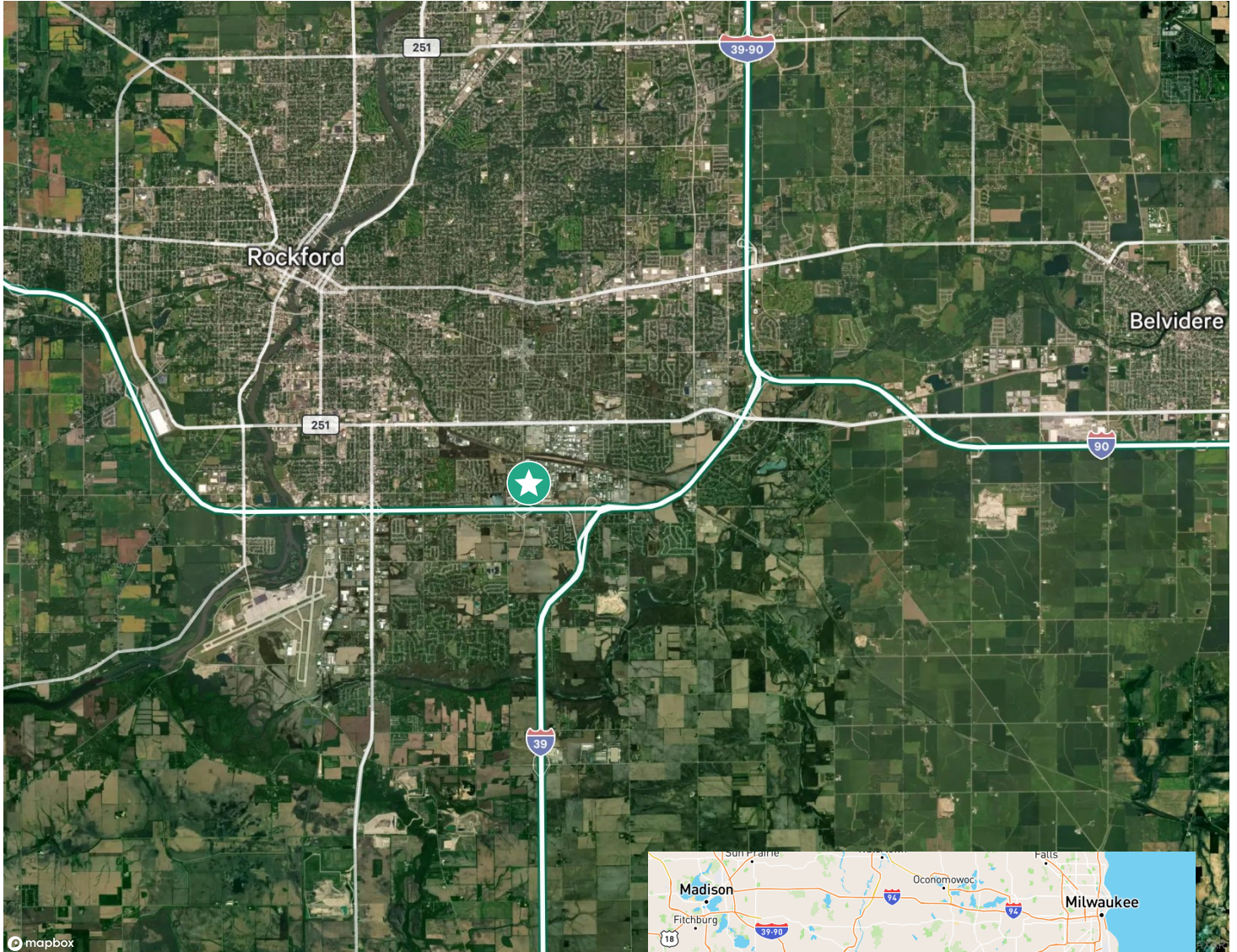
3405 Lonergan Drive, Rockford, IL  
Industrial Building

For Lease



3405 Lonergan Drive, Rockford, IL  
Industrial Building

For Lease



## Contact Us

**Karen Walsh**

Senior Vice President

+1 815 218 3438

Karen.Walsh@cbre.com

© 2024 CBRE, Inc. All rights reserved. This information has been obtained from sources believed reliable, but has not been verified for accuracy or completeness. You should conduct a careful, independent investigation of the property and verify all information. Any reliance on this information is solely at your own risk. CBRE and the CBRE logo are service marks of CBRE, Inc. All other marks displayed on this document are the property of their respective owners, and the use of such logos does not imply any affiliation with or endorsement of CBRE. Photos herein are the property of their respective owners. Use of these images without the express written consent of the owner is prohibited.

**CBRE**